

Full Function Pressure Limited Ventilator



Dedicated to Innovation



- ⇒ **BPR (Back Pressure) based ventilator technology**
- ⇒ **EIP (Emergency Intake Port)**
- ⇒ **SRV (Overpressure Relief)**
- ⇒ **Expiratory Tidal Volume**
- ⇒ **PIP, PEEP, I:E, RR, & FiO2**
- ⇒ **Can attach to House Air and O2 Supply (Blender not included)**
- ⇒ **7" HMI Screen**
- ⇒ **110V or 220V input power**
- ⇒ **Wide Control Range**
- ⇒ **Made in USA**

The BPR Ventilator is an Emergency Use Ventilator (EUV) indicated to provide continuous ventilatory support of adult patients who require mechanical ventilation when a FDA cleared ventilator is not available due to the COVID-19 pandemic.

It is a pressure-limited time-cycled ventilator intended to provide emergency use ventilation in a hospital environment for the duration of the COVID-19 pandemic.

The ventilator is a value-added, rapidly deployable ventilator inherently safe against over pressurization of the lungs. It is targeted at adult patients experiencing acute respiratory distress syndrome (ARDS) and other serious breathing difficulties related to COVID-19.

The ventilator is designed to accept 50psi compressed air or oxygen mix and is powered by a standard 110V/220V AC outlet or an optional DC battery supply. The device is designed to accommodate a standard 22 mm ventilator circuit outfitted with either a mask or endotracheal tube.

It uses proprietary back-pressure regulator (BPR) based ventilator technology.

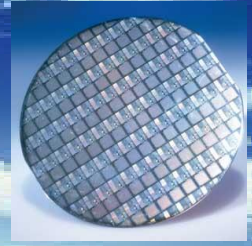


WWW.PPEBUYDIRECT.COM
sales@ppebuydirect.com





Providing Low Cost Sourcing of PPE At the Best Price!



GENERAL SPECIFICATIONS

provides pressure-limited time-cycled CMV (continuous mandatory ventilation).

Performance:

| | |
|---------------------------------------|--|
| Tidal Volume: | 50 to 800 mL |
| Volumetric flowrate: | 100 LPM min @ 60 cmH2O, 1 sec Inspiration |
| Continuous Operation: | 21 days (min) |
| PIP: | 15-50 cmH2O |
| PEEP: | 5-24 cmH2O |
| Resp. Rate: | 6-40 b/min |
| I:E Ratio: | 2:1, 1:1, 1:2, 1:3, 1:4 |
| Flow: | 10 - 150 L/min |
| Mechanical Failsafe: | 80 cm H2O |
| Inspiratory time: | 0.2 to 6.7 s |
| FiO2: | 21 to 100% |
| Working pressure: | 5 to 55 mbar |
| Sound pressure level: | 30 dBA (per NF EN ISO 17510-1 test conditions); does not exceed 55 dBA per EN ISO 80601-2-72 test conditions |
| Sound power level: | Does not exceed 63 dBA per EN ISO 80601-2-72 test conditions |
| Maximum pressure limit: | 80 mbar |
| Internal compliance: | 0.0001 l/mbar |
| Inspiratory triggering response time: | 100 ms |
| Avg total response time to change | |
| FiO2 from 21% to 90% O2: | <30s |
| Maximum temperature of enclosure: | 35 C |



PPE BUY DIRECT is a Division of **INVAC SYSTEMS INC**, a Global Supplier of Equipment, Spare Parts, Service, and Process for the Solar, Semiconductor, MEMS, and Healthcare Industries.



PPE BUY DIRECT



**PPE DIVISION
US SPARE PARTS
TECHNICAL SALES
Dallas - Texas**

**211 N. Dooley Street
Grapevine, TX 76051
(P) +1 817 527 6084**

WWW.PPEBUYDIRECT.COM

